



THE MOUNTAIN VIEW



THE MOUNTAIN VIEW

Model number:

3 beds • 2 baths • 1584 sq.ft. • 28' width • 66' depth

Our home building facilities invest in continuous product and process improvements. Plans, dimensions, features, materials, specifications and availability are subject to change without notice or obligation. Renderings and floor plans are representative likenesses of our homes and may differ from the actual homes. We invite you to tour a Home Center near you and inspect the highest value in quality housing available or call (228) 831-8088 to speak with a Home Consultant. Copyright 2017, CMH. All rights reserved.

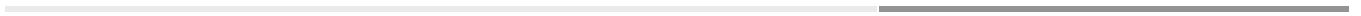
<https://www.claytongulfport.com>

CLAYTON HOMES- GULFPORT

16103 HWY 49
GULFPORT, MS 39503

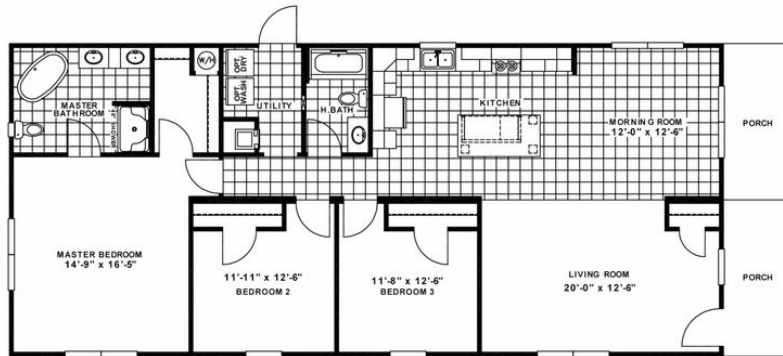
Monday - Thursday: 9am to 6pm
Friday: 9am to 6pm
Saturday: 9am to 5pm
Sunday: Closed

(228) 831-8088





THE MOUNTAIN VIEW



THE MOUNTAIN VIEW Model number:

3 beds • 2 baths • 1584 sq.ft. • 28' width • 66' depth

Our home building facilities invest in continuous product and process improvements. Plans, dimensions, features, materials, specifications and availability are subject to change without notice or obligation. Renderings and floor plans are representative likenesses of our homes and may differ from the actual homes. We invite you to tour a Home Center near you and inspect the highest value in quality housing available or call (228) 831-8088 to speak with a Home Consultant. Copyright 2017, CMH. All rights reserved.

<https://www.claytongulfport.com>

CLAYTON HOMES- GULFPORT

16103 HWY 49
GULFPORT, MS 39503

Monday - Thursday: 9am to 6pm
Friday: 9am to 6pm
Saturday: 9am to 5pm
Sunday: Closed

(228) 831-8088